

The Lake Lothing (Lowestoft) Third Crossing Order 201[*]



Lake Lothing
**THIRD
CROSSING**

Document SCC/LLTC/EX/157: Environmental Statement Volume 2 Figures 5.1 to 5.5

Planning Act 2008

**The Infrastructure Planning (Applications: Prescribed Forms and Procedure)
Regulations 2009**

The Infrastructure Planning (Examination Procedure) Rule 2010

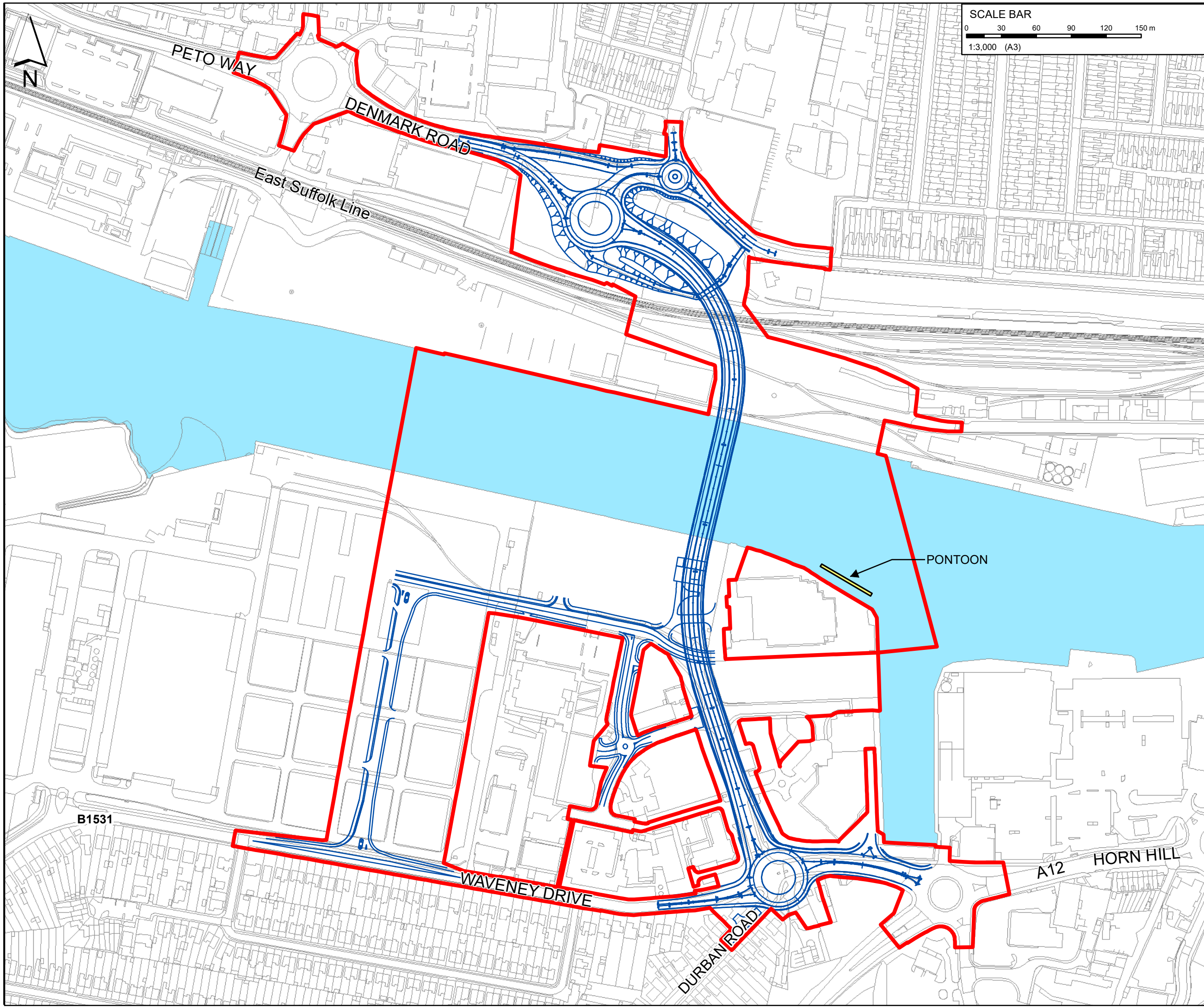
PINS Reference Number: TR010023

Author: Suffolk County Council

Document Reference: SCC/LLTC/EX/157

Date: May 2019

This page is intentionally left blank



SCALE BAR
0 30 60 90 120 150 m
1:3,000 (A3)

KEY

- Order Limits
- The Scheme (illustrative)

Mapping reproduced by permission of Ordnance Survey on behalf of HMSO.
© Crown copyright and database rights 2017. All rights reserved.
Ordnance Survey licence number 100023395
Contains OS data © Crown copyright and database rights 2017.

P01	DH	HR	JB	11/04/2019
ORDER LIMITS REVISED & DESIGN AMMENDMENTS				
P00	IW	HR	MD	11/05/2018
ORDER LIMITS REVISED & MINOR AMENDMENTS				
REVISION	DRAWN	CHECKED	APPROVED	DATE
DESCRIPTION				

Suffolk
County Council

PROJECT TITLE**Lake Lothing
THIRD
CROSSING**

DRAWING TITLE

Order Limits and the Scheme
Figure 5.1

DRAWING STATUS

For DCO Examination

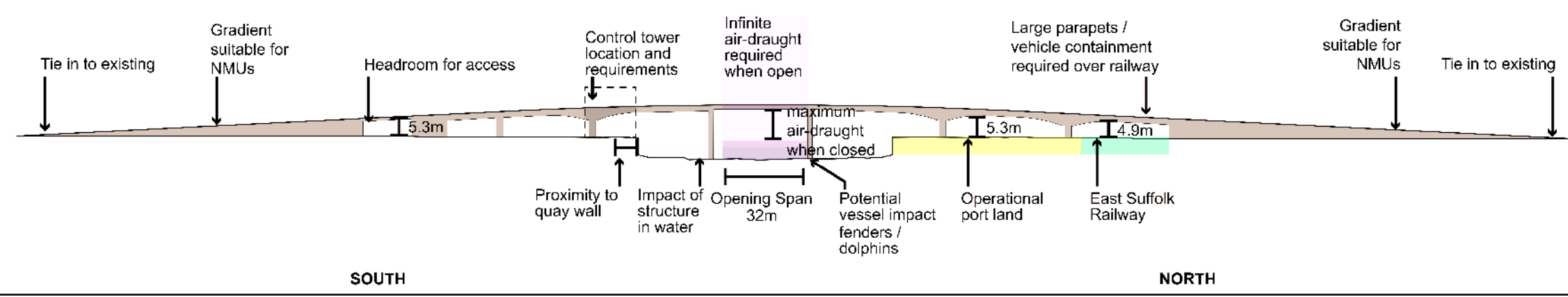
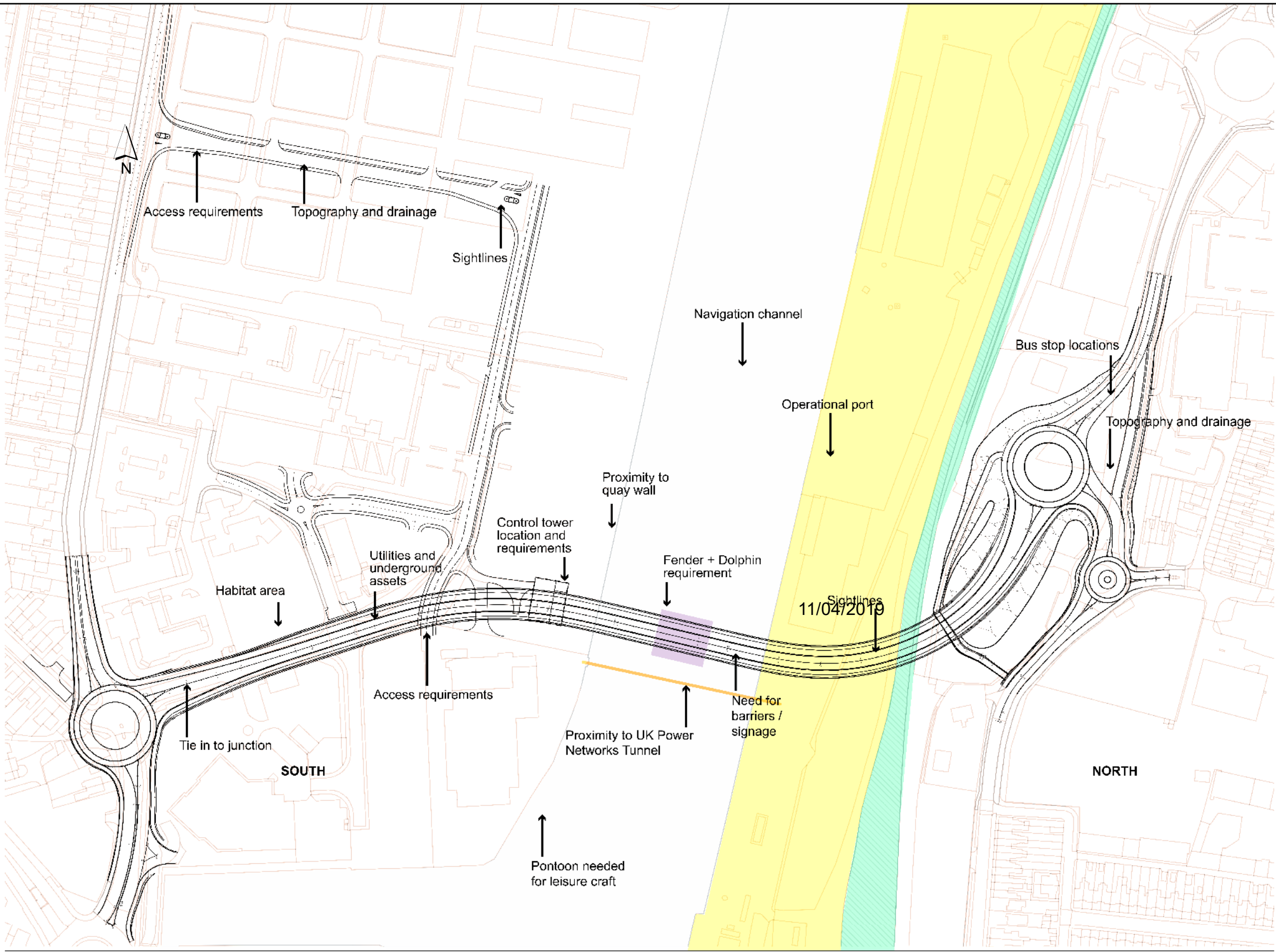
DRAWN	CHECKED	APPROVED	AUTHORISED	SUITABILITY
DH	HR	HR	JB	S4

SCALE @ A3 SIZE	DATE	REVISION
1:3,000	11/04/2019	P01

DRAWING NUMBER

Project	Originator	Volume
1069948-WSP-EGN-LL_C19-SK-LE-003		
Location	Type	Role
		Number


Document Path: \\uk.wspgroup.com\central data\Projects\62240xxx\62240712 - Lake Lothing DCO ES\GIS Data\01 GIS Mapping\ES_Figures\Figure 5.1 1069948-WSP-EGN-LL-C19-SK-LE-0003 P01.mxd



KEY
— The Scheme (illustrative)


Mapping reproduced by permission of Ordnance Survey on behalf of HMSO.
© Crown copyright and database rights 2017. All rights reserved.
Ordnance Survey licence number 100023395
Contains OS data © Crown copyright and database rights 2017.

P01	DH	HR	JB	11/04/2019
DESIGN AMMENDMENTS				
P00	IW	HR	JB	18/06/2018
ORIGINAL ISSUE				
REVISION	DRAWN	CHECKED	APPROVED	DATE
DESCRIPTION				



Suffolk
County Council

PROJECT TITLE



Lake Lothing
THIRD CROSSING

DRAWING TITLE

Design considerations
Regulation 5(2)(a)
Figure 5.2

DRAWING STATUS

For DCO Examination

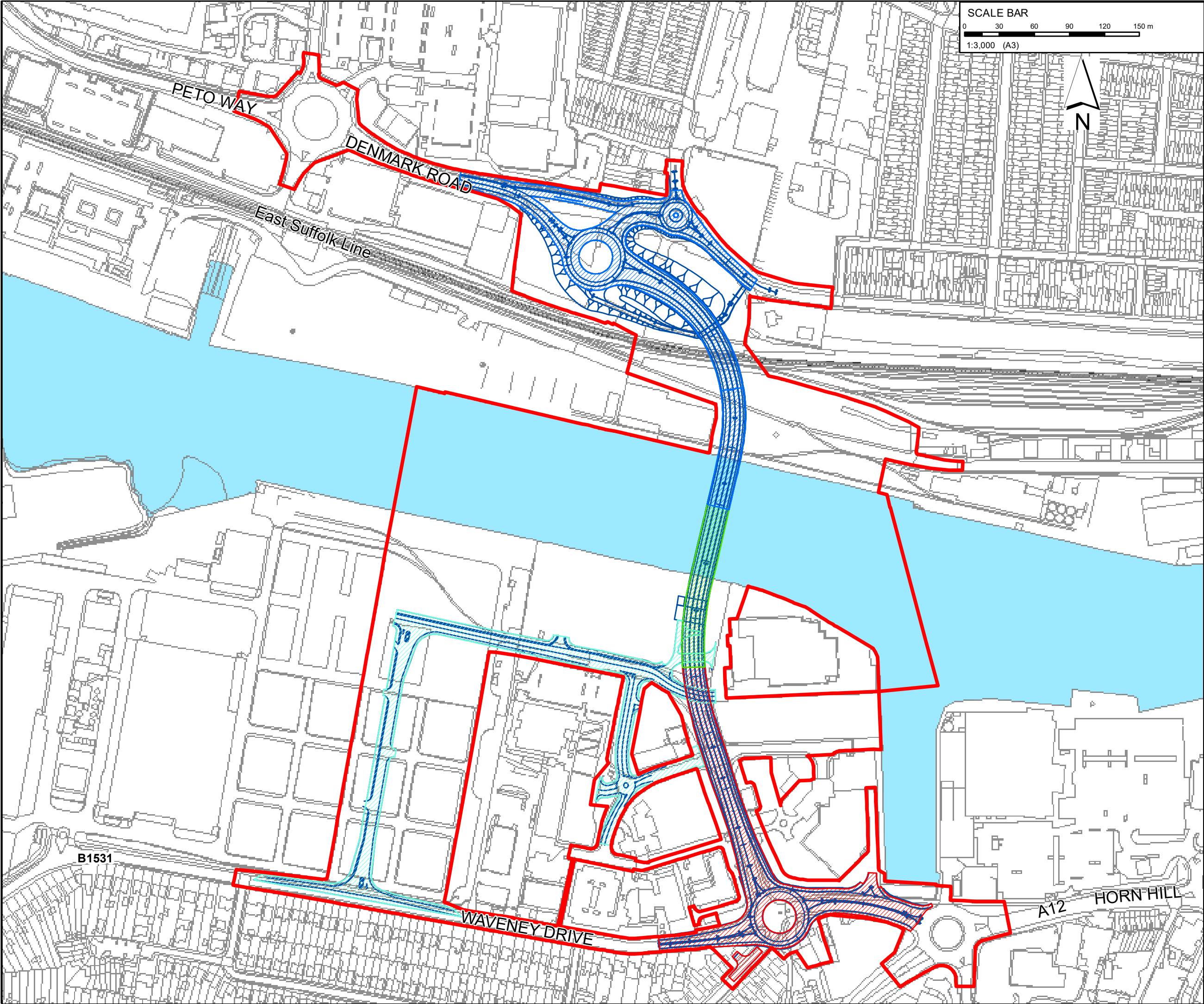
DRAWN	CHECKED	APPROVED	AUTHORISED	SUITABILITY
DH	HR	HR	JB	S4

SCALE @ A3 SIZE	DATE	REVISION
NOT TO SCALE	11/04/2019	P01

DRAWING NUMBER

1069948-WSP-EGN-LL-SK-LE-0016

Project	Originator	Volume
Location	Type	Role
		Number



KEY

- Order Limits
- The Scheme (illustrative)

Drainage Area

- Drainage Area A
- Drainage Area B
- Drainage Area C
- Drainage Area D

Mapping reproduced by permission of Ordnance Survey on behalf of HMSO.
© Crown copyright and database rights 2017. All rights reserved.
Ordnance Survey licence number 100023395
Contains OS data © Crown copyright and database rights 2017.

P01	DH	HR	JB	11/04/2019
ORDER LIMITS REVISED & DESIGN AMMENDMENTS				
P00	IW	HR	JB	18/06/2018
ORIGINAL ISSUE				
REVISION	DRAWN	CHECKED	APPROVED	DATE
DESCRIPTION				

Suffolk County Council

PROJECT TITLE

Lake Lothing THIRD CROSSING

DRAWING TITLE

Drainage Arrangement
Regulation 5(2)(a)
Figure 5.3

DRAWING STATUS

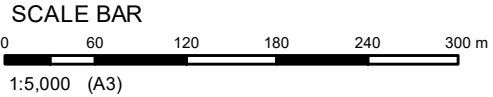
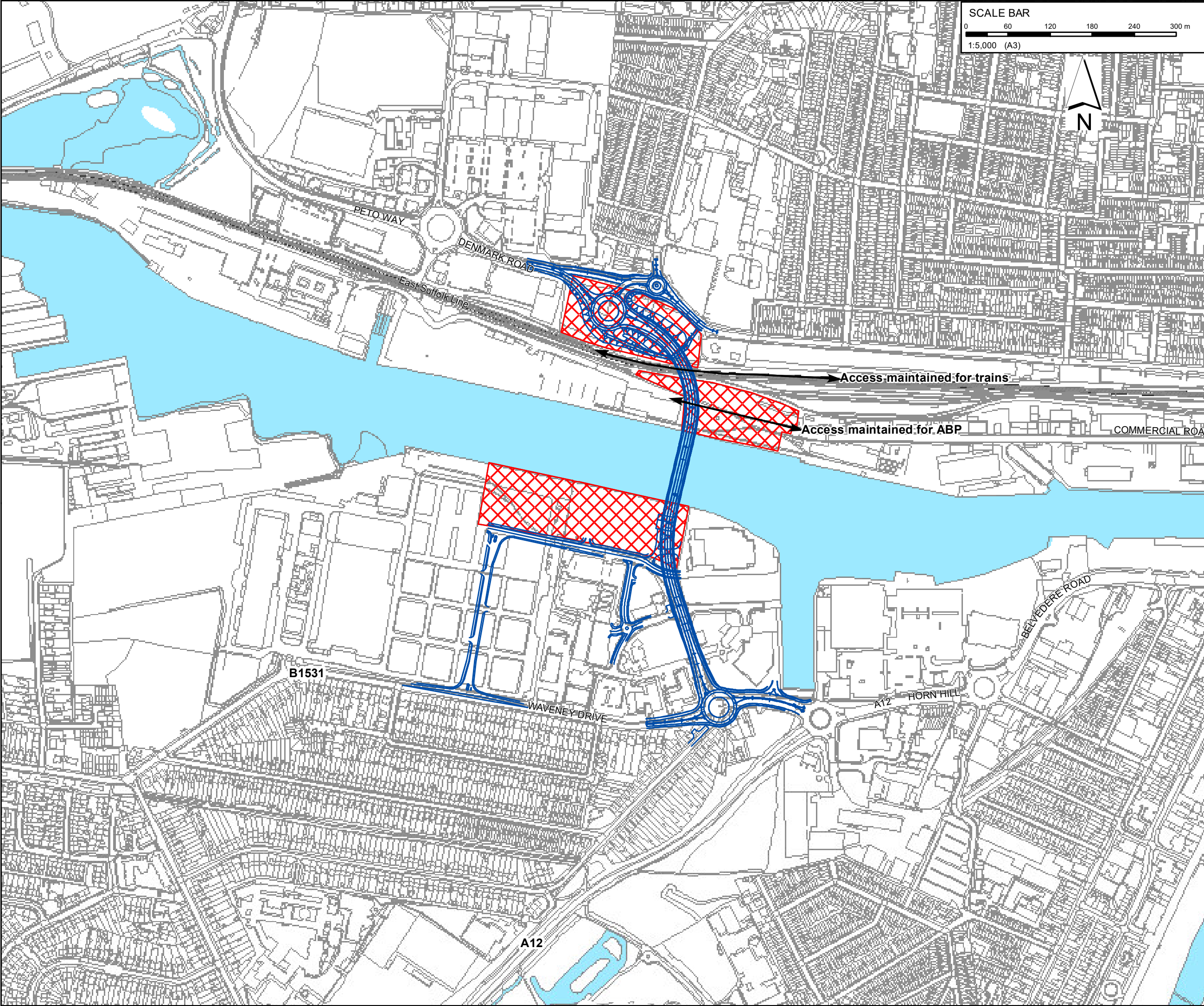
For DCO Examination

DRAWN	CHECKED	APPROVED	AUTHORISED	SUITABILITY
DH	HR	HR	JB	S4

SCALE @ A3 SIZE	DATE	REVISION
1:3,000	11/04/2019	P01

DRAWING NUMBER

Project	Originator	Volume	
1069948-WSP-EGN-LL-SK-LE-0028			
Location	Type	Role	Number



KEY

- The Scheme (illustrative)
- East Suffolk Line
- Compound

Mapping reproduced by permission of Ordnance Survey on behalf of HMSO.
© Crown copyright and database rights 2017. All rights reserved.
Ordnance Survey licence number 100023395
Contains OS data © Crown copyright and database rights 2017.

P01	DH	HR	JB	11/04/2019
ORDER LIMITS REVISED & DESIGN AMMENDMENTS				
P00	IW	HR	JB	18/06/2018
ORIGINAL ISSUE				
REVISION	DRAWN	CHECKED	APPROVED	DATE
DESCRIPTION				

PROJECT TITLE

Lake Lothing
THIRD CROSSING

DRAWING TITLE

Construction Compound Locations
Regulation 5(2)(a)
Figure 5.4

DRAWING STATUS

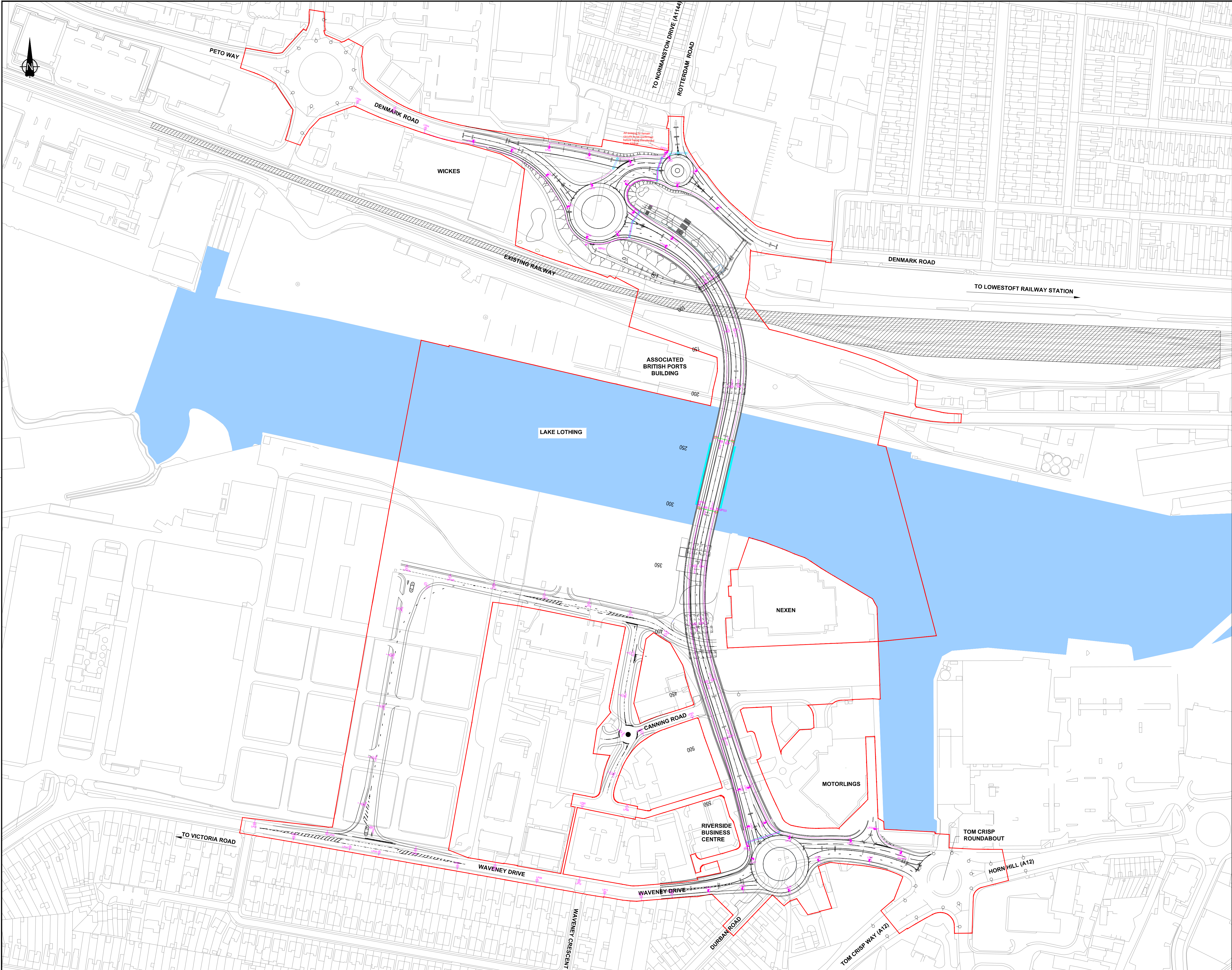
For DCO Examination

DRAWN	CHECKED	APPROVED	AUTHORISED	SUITABILITY
DH	HR	HR	JB	S4

SCALE @ A3 SIZE	DATE	REVISION
1:5,000	11/04/2019	P01

DRAWING NUMBER

Project	Originator	Volume	
1069948-WSP-EGN-LL-SK-LE-0013			
Location	Type	Role	Number



KEY

PROPOSED 8M STEEL ROAD LIGHTING POST TOP COLUMN
INCORPORATING A PHILIPS MINI LUMA BGR21 DM10
LED-HB 55/740 WITH A 7.60KLM OUTPUT, NEMA SOCKET & TELENESA TELECELL

PROPOSED 10M STEEL ROAD LIGHTING COLUMN WITH
SINGLE BRACKET ARM HAVING A PROJECTION OF 0.5M
INCORPORATING A PHILIPS LUMA 1 BGR23 DM70 BL2
LED-HB 45/740 WITH A 12.50KLM OUTPUT, NEMA SOCKET & TELENESA TELECELL

PROPOSED 10M STEEL ROAD LIGHTING COLUMN WITH
SINGLE BRACKET ARM HAVING A PROJECTION OF 0.5M
INCORPORATING A PHILIPS LUMA 1 BGR23 DM70 BL2
LED-HB 45/740 WITH A 18.00KLM OUTPUT, NEMA SOCKET & TELENESA TELECELL

PROPOSED 10M STEEL ROAD LIGHTING COLUMN WITH
SINGLE BRACKET ARM HAVING A PROJECTION OF 0.5M
INCORPORATING A PHILIPS LUMA 1 BGR23 DM70 LED-HB
45/740 WITH A 18.00KLM OUTPUT, NEMA SOCKET & TELENESA TELECELL

PROPOSED 10M STEEL ROAD LIGHTING COLUMN WITH
SINGLE BRACKET ARM HAVING A PROJECTION OF 0.5M
INCORPORATING A PHILIPS LUMA 1 R4 20-80 DS-CW
1800-18100 CW LED WITH A 10.00KLM OUTPUT, NEMA
SOCKET & TELENESA TELECELL

PROPOSED SETBACK MARKER

PROPOSED HIGHWAY LIGHTING PILLAR

PROPOSED ROAD CROSSING DUCT - 2 NO. 100MM
ORANGE UPVC DUCT COMPLETE WITH DRAWPIT
CHAMBERS AND HEAVY DUTY LID

PROPOSED PRIVATE NETWORK CABLE.

PROPOSED FEEDER PILLAR - FEATURE LIGHTING

COMPACT INGROUND ADJUSTABLE LED UPLIGHT. THE
SPREAD OF THE LIGHT CAN BE ADJUSTED ACCORDING TO
NEEDS. IP 67, IK 10

LED LUMINAIRE WITH STREET LIGHTING DISTRIBUTION
MOUNTED ON 4.5M COLUMN. IP 65, IK 06

NOTES

Mapping reproduced by permission of Ordnance Survey on behalf of HMSO.
© Crown copyright and database rights 2017. All rights reserved.
Ordnance Survey licence number 100023395
Contains OS data © Crown copyright and database rights 2017.